



Connie
Student Success
Manager

Maricela
Student Success
Officer

We offer a range of free and confidential services to help with your academic development so you can get the most out of your study.

Level 2

Availability: Monday - Friday

9 am - 4.30 pm (*public holidays excluded*)

Phone: (07) 3001 7894

Email: learningcentre@jcub.edu.au



Academic development

**Support and advice to
achieve your best results**

**Study planning and time
management**

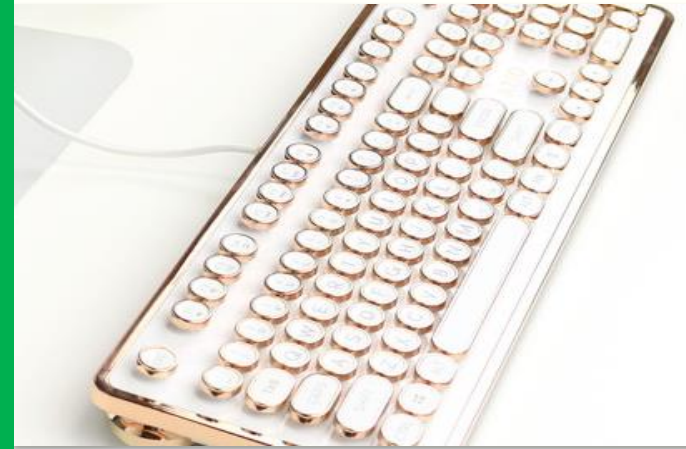


Assignment structure

Academic writing

Research skills

Referencing



**Exam preparation and
techniques**

Academic progression

English support

Student Success

- Capability – developing learning readiness
- Connectedness – staff and students
- Purpose – reasons and relevance
- Resourcefulness – Balance work, life and study – 15h/subject/week. Speak up, reach out.
- Academic culture – understanding university culture in Australia



JAMES COOK
UNIVERSITY
AUSTRALIA

Brisbane



Understanding Assessment In Australia

A short video

Higher Order Thinking

• You will be expected to:

- Analyse
- Synthesize
- Evaluate
- CREATE



Add to the
existing body of
knowledge

knowledge.



What is Academic Integrity?

'the expectation that teachers, students, researchers and all members of the academic community act with: **honesty, trust, fairness, respect and responsibility.**'

Breach of academic integrity is also known as 'academic misconduct' or 'academic dishonesty'. (TEQSA, 2022)

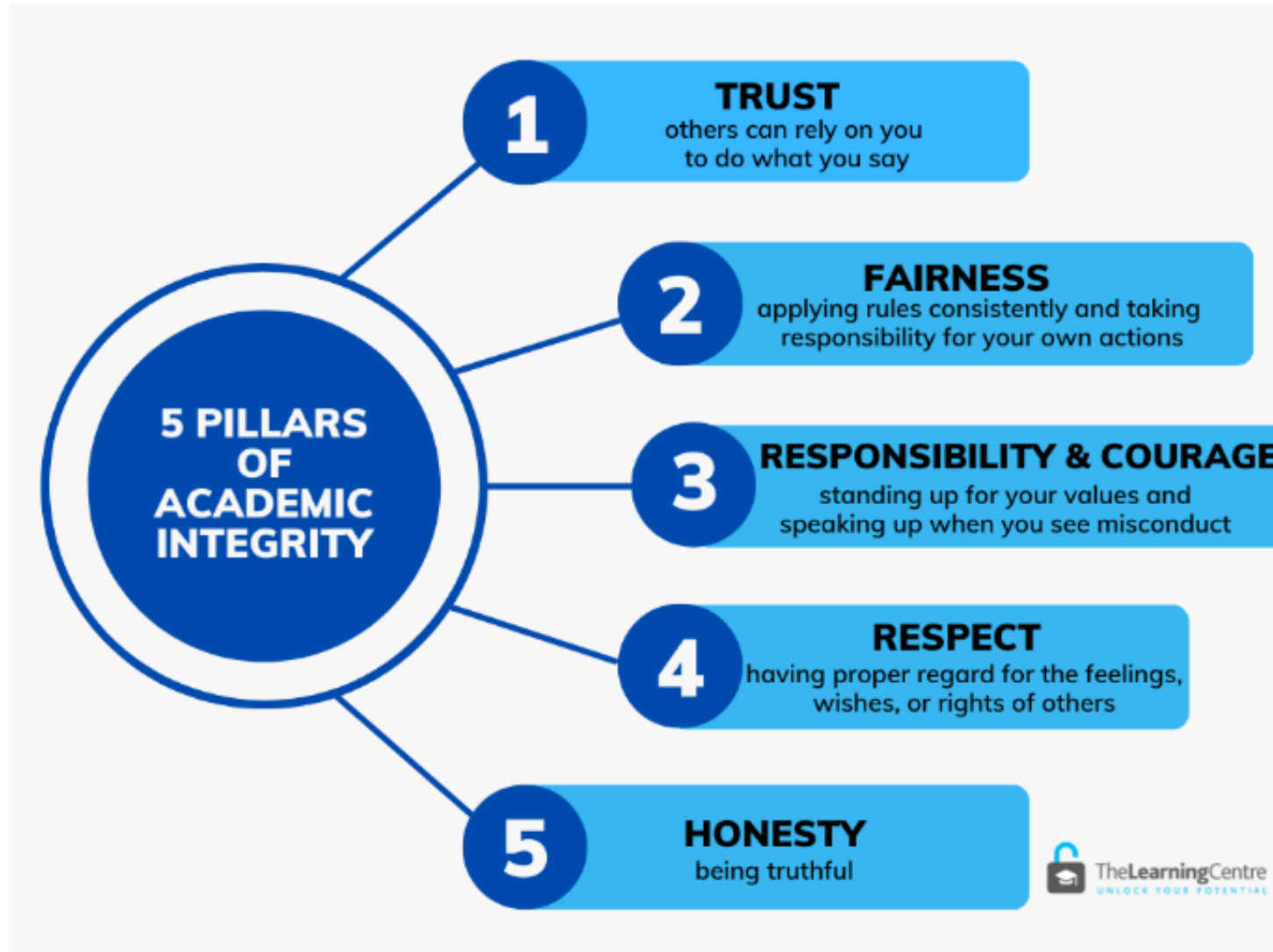
<https://www.jcu.edu.au/students/learningcentre/during-the-study-period/academic-integrity>



JAMES COOK
UNIVERSITY
AUSTRALIA

Brisbane

Academic Integrity



Trust: Being transparent and being genuine

Fairness: Treating others equally, and applying ethical rules to yourself and others without bias

Responsibility and Courage: Being accountable for your actions, doing the right thing even when it is easier not to

Respect: Listening to others, and recognising their contributions to research by referencing

Honesty: Be truthful and give credit to others where necessary

Mandatory completion of [the JCU Academic Integrity module](#) is a **condition of ongoing enrolment**. Final subject results may be withheld and/or future enrolments prevented if the module is not completed before the end of the first major study period after commencement.



ACADEMIC MISCONDUCT

In higher education, academic misconduct encompasses a range of unethical behaviours that undermine the principles of honesty and integrity in the academic environment.

Avoiding Academic Misconduct

- **Plagiarism** – always reference other’s work when you use it in your assignments.
- **Contract Cheating** – write your own assessment, don’t buy, sell, or lend your work to others.
- **Collusion** – work on individual assessment by yourself, don’t have others do it for you.
- **Cheating** in exams or quizzes – use your own knowledge to complete all assessment items.
- **Falsification** – create your own data and report it truthfully.

GenAI and Integrity at Uni

What is it?

Generative AI tools can create things like text, pictures, music, code and voices; includes AI chatbots, ChatGPT, Grammarly.

Why is it important?

Using GenAI must be aligned with JCU's Academic Integrity policy and procedures. Avoid breaching Academic Integrity policy.

Correct use of GenAI



1. Permission to use GenAI.
2. Unpacking your assignment.
3. A starting point to brainstorm ideas.
4. Editing your work and provide instant feedback.

Incorrect use of GenAI

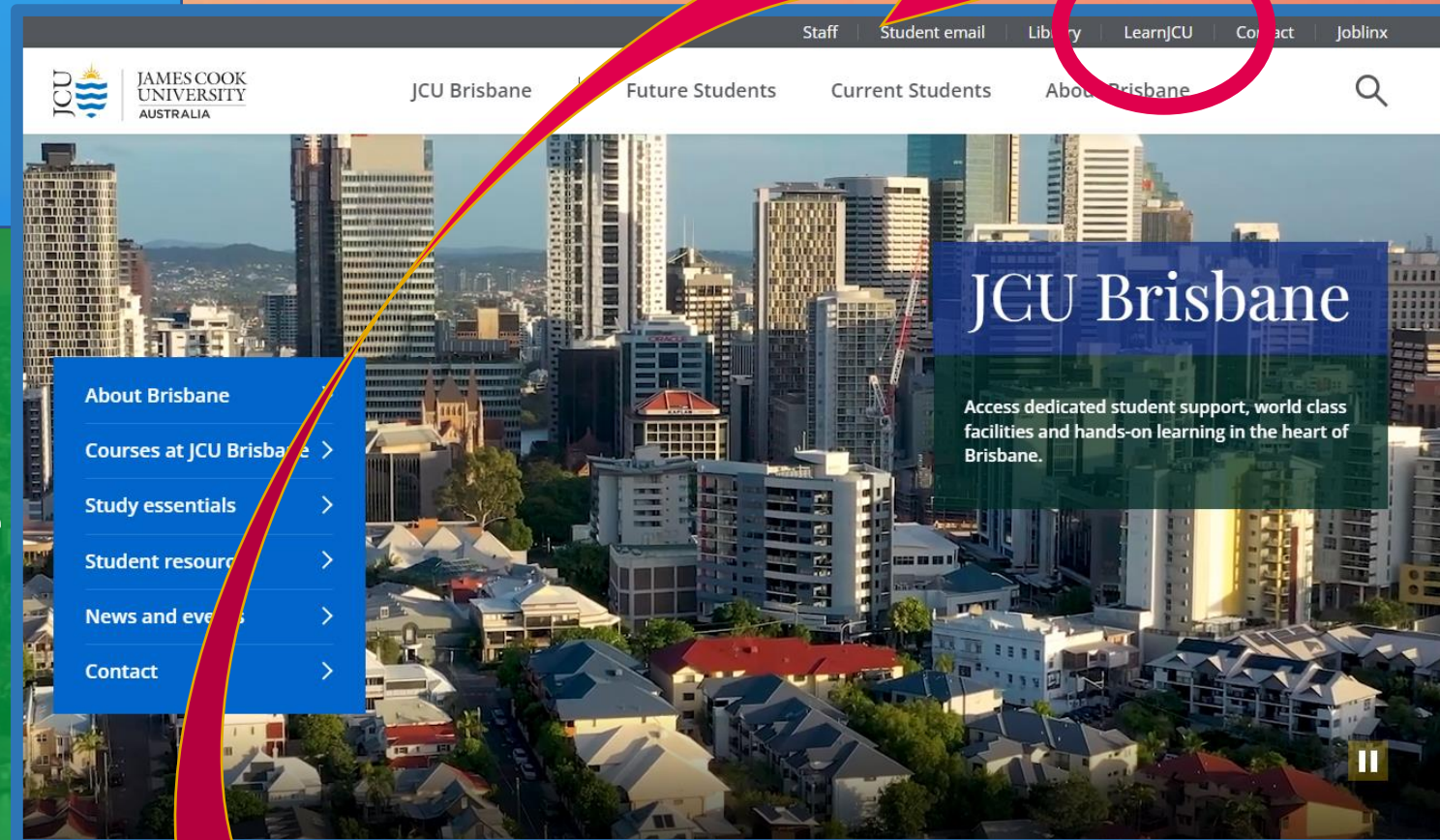


1. Don't ask ChatGPT to write essays for you or do your assessment
2. AI-generated information is not always accurate or factual.
3. DO NOT present GenAI generated content as your own work.

ONLY USE GenAI as a starting or referencing point for your work, or to prepare for quizzes and exams.

LearnJCU

- Announcements and messages from your lecturers regarding any changes to your lecture schedule
- An electronic copy of the **subject outline**
- Staff **contact** details
- Lecture** notes and recordings
- Digital media
- Web-based **resources**, eg eTextbooks
- Subject **readings**
- Assessment** dropboxes
- Feedback** on submitted assessment
- Communication** tools and collaboration spaces



The screenshot shows the JCU Brisbane website interface. At the top, there is a navigation bar with links for Staff, Student email, Library, LearnJCU, Contact, and Joblink. Below this, the JCU logo and 'JAMES COOK UNIVERSITY AUSTRALIA' are displayed. The main navigation menu includes 'JCU Brisbane', 'Future Students', 'Current Students', and 'About Brisbane'. A search icon is located on the right. The background features a cityscape with a river. A blue dropdown menu is open under 'About Brisbane', listing 'About Brisbane', 'Courses at JCU Brisbane', 'Study essentials', 'Student resources', 'News and events', and 'Contact'. A red arrow points from the 'About Brisbane' link to the dropdown menu. A red circle highlights the 'About Brisbane' link in the top navigation bar. A blue banner at the bottom of the screenshot contains the URL 'https://www.jcub.edu.au'.

<https://www.jcub.edu.au>



Welcome

Trine

Activity Stream

Subjects

Organisations

Calendar

Messages

Grades

Tools

Sign Out

Learning online - What you need to know

- Stay connected
- Know your communication tools
- Manage your time
- Be proactive
- Create a positive study environment



LEARNING ONLINE
What you need to know

Student help links



- Help in LearnJCU
- Have a Question? Ask Us
- Library Search
- Academic Support
- Student Support



Navigating LearnJCU

Watch 2 short videos

<https://www.jcu.edu.au/learn/guides>

Navigating a Subject



Academic Integrity

Mandatory completion of the [JCU Academic Integrity module](#) is a condition of ongoing enrolment. Final subject results may be withheld and/or future enrolments prevented if the module is not completed before the end of the first major study period after commencement.



Academic Calendar

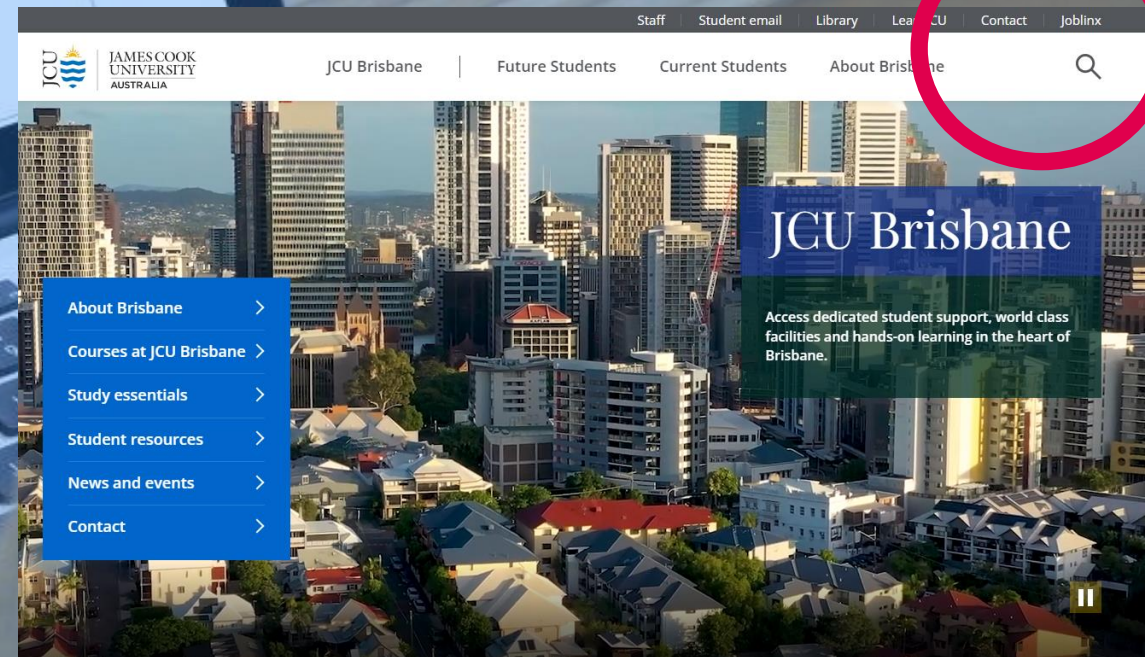
<https://www.jcub.edu.au>



Search

Search James Cook University

academic calendar



The screenshot shows the JCU Brisbane website homepage. At the top, there is a navigation bar with the JCU logo and text: "JAMES COOK UNIVERSITY AUSTRALIA". To the right of the logo are links for "JCU Brisbane", "Future Students", "Current Students", and "About Brisbane". Further right are links for "Staff", "Student email", "Library", "Learn JCU", "Contact", and "Joblink". A search icon is located in the top right corner of the navigation bar. Below the navigation bar is a large banner image of a cityscape. On the right side of the banner, there is a blue box with the text "JCU Brisbane" and "Access dedicated student support, world class facilities and hands-on learning in the heart of Brisbane." On the left side of the banner, there is a blue vertical menu with the following items: "About Brisbane", "Courses at JCU Brisbane", "Study essentials", "Student resources", "News and events", and "Contact". A red circle highlights the search icon in the top right corner of the navigation bar.

Academic Calendar

MAY

	Mon	Tues	Wed	Thu	Fri	Sat	Sun
			1	2	3	4	5
	6	7	8	9	10	11	12
	13	14	15	16	17	18	19
wk 1	20	21	22	23	24	25	26
wk 2	27	28	29	30	31		

JUNE

	Mon	Tues	Wed	Thu	Fri	Sat	Sun
wk 2						1	2
wk 3	3	4	5	6	7	8	9
wk 4	10	11	12	13	14	15	16
wk 5	17	18	19	20	21	22	23
	24	25	26	27	28	29	30

JULY

	Mon	Tues	Wed	Thu	Fri	Sat	Sun
	1	2	3	4	5	6	7
wk 6	8	9	10	11	12	13	14
wk 7	15	16	17	18	19	20	21
wk 8	22	23	24	25	26	27	28
wk 9	29	30	31				

AUGUST

	Mon	Tues	Wed	Thu	Fri	Sat	Sun
wk 9				1	2	3	4
wk 10	5	6	7	8	9	10	11
	12	13	14	15	16	17	18
	19	20	21	22	23	24	25
	26	27	28	29	30	31	

SEPTEMBER

	Mon	Tues	Wed	Thu	Fri	Sat	Sun
							1
	2	3	4	5	6	7	8
	9	10	11	12	13	14	15
	16	17	18	19	20	21	22
	23	24	25	26	27	28	29
	30						

- Applications Close
- Teaching
- Payment due date
- Withdrawal/enrolment deadline
- Class Registration closes
- Exam period
- Results publication
- Lecture Recess/Study Vacation
- Deferred/ Supplementary Exams
- Public Holiday
- Orientation
- Census date

IMPORTANT DATES TR2

APRIL

FRI 26 Credit/Course Transfer/Return to Study Applications close

MAY

MON 6 Public Holiday: Labour Day
 MON 13 - FRI 17 Orientation week
 MON 20 Trimester 2 begins
 WED 29 Enrolments close

JUNE

MON 3 Payment Due Date
 THU 13 Census Date
 FRI 28 Last Withdrawal without Academic Penalty
 MON 24 - SUN 30 Lecture Recess

JULY

MON 1 - FRI 5 Lecture Recess

AUGUST

MON 12 - SUN 18 Study Vacation
 MON 19 - SAT 24 Exam Period
 SAT 24 Trimester 2 ends

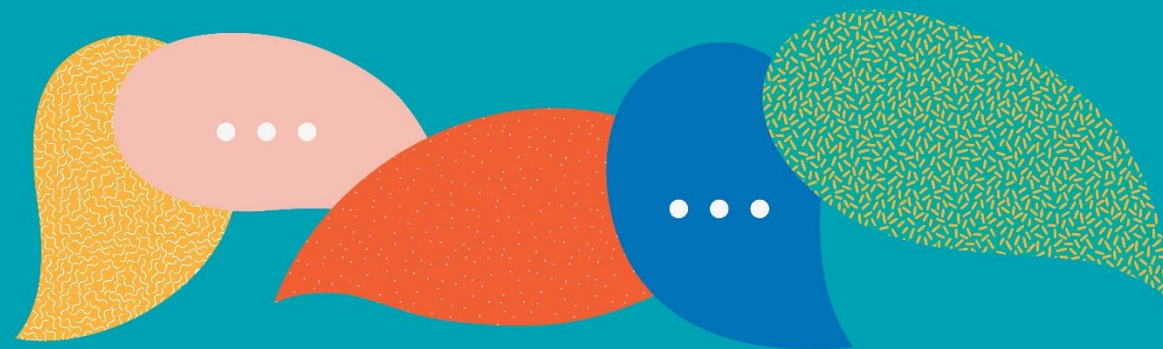
SEPTEMBER

MON 9 Results Published
 MON 9 - FRI 13 Deferred/ Supplementary Exams (subject to change)

Enhance your English

Ready to take your English to the next level?

JCU Brisbane students can join our fun and FREE programs to improve your professional communication, vocabulary, writing, and boost your presentation skills.



Contact us

The Learning Centre
learningcentre@jcub.edu.au
07 3001 7894

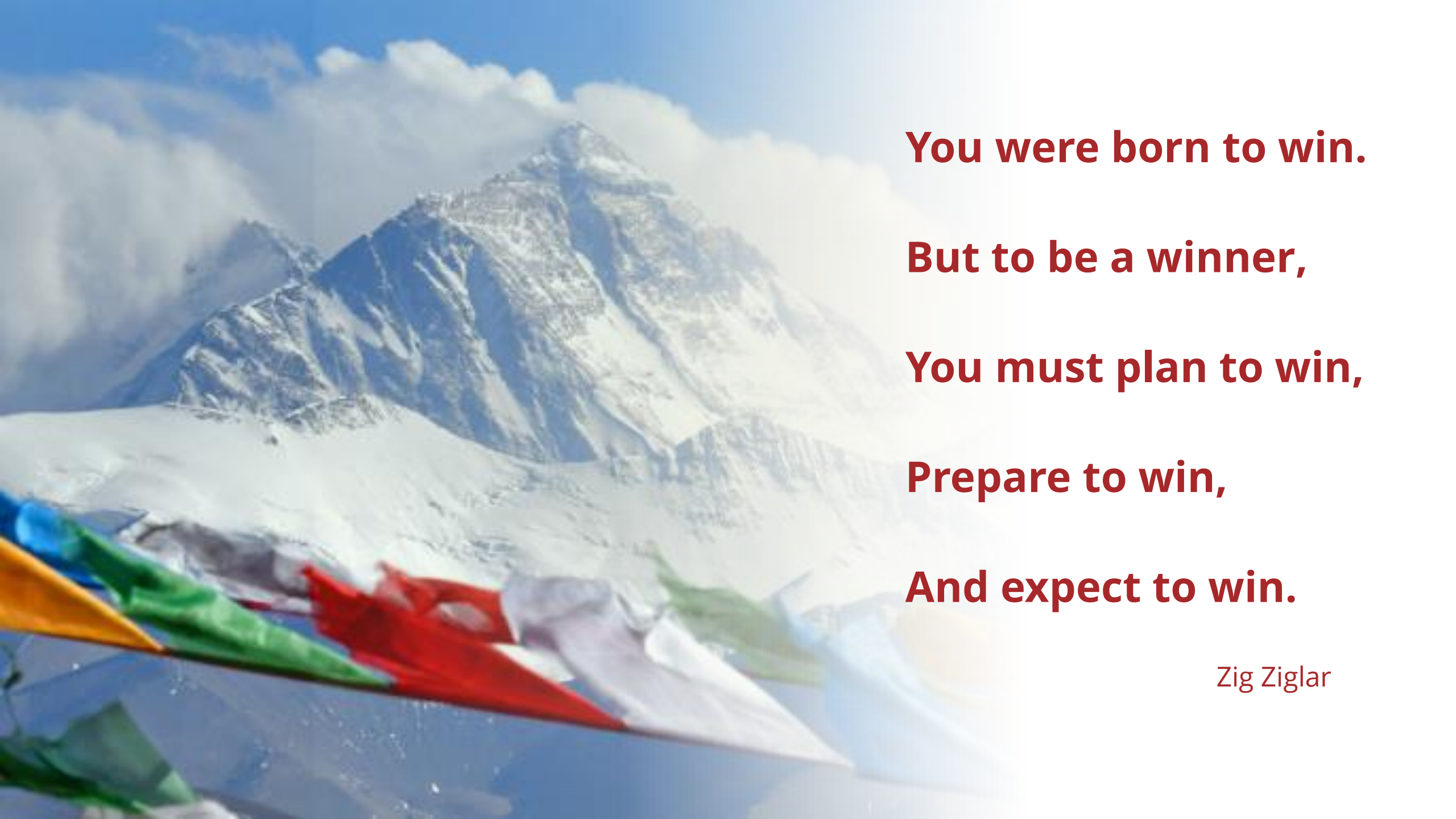
Scan the QR code to email us





In conclusion, we provide a free personalised service supporting all students across the student lifecycle. This includes:

- Supporting study progress during the study period.
- Assessing personal challenges and providing referrals to appropriate specialist services at JCU and in the community.
- Helping with JCU policies and administrative tasks relevant to study or assessment.



You were born to win.

But to be a winner,

You must plan to win,

Prepare to win,

And expect to win.

Zig Ziglar